

Cat. No. MHC-HM420

Description

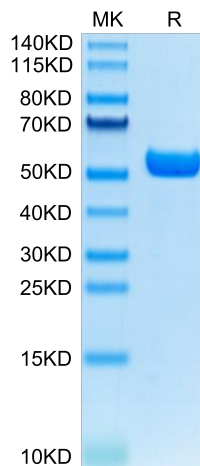
Source	Recombinant Human HLA-A*11:01&B2M&KRAS G12D (VVVGADGVGK) Monomer Protein is expressed from HEK293 with His tag and Avi tag at the C-Terminus. It contains Gly25-Thr305(HLA-A*11:01),Ile21-Met119(B2M) and VVVGADGVGK peptide.
Accession	AAV53343.1(HLA-A*11:01)&P61769(B2M)&VVVGADGVGK
Molecular Weight	The protein has a predicted MW of 50.3 kDa. Due to glycosylation, the protein migrates to 51-60 kDa based on Tris-Bis PAGE result.
Endotoxin	Less than 1EU per µg by the LAL method.
Purity	> 95% as determined by Tris-Bis PAGE > 95% as determined by HPLC

Formulation and Storage

Formulation	Lyophilized from 0.22µm filtered solution in PBS (pH 7.4). Normally 8% trehalose is added as protectant before lyophilization.
Reconstitution	Centrifuge the tube before opening. Reconstituting to a concentration more than 100 µg/ml is recommended. Dissolve the lyophilized protein in distilled water.
Storage	-20 to -80°C for 12 months as supplied from date of receipt. -80°C for 3-6 months after reconstitution. 2-8°C for 2-7 days after reconstitution. Recommend to aliquot the protein into smaller quantities for optimal storage. Please minimize freeze-thaw cycles.

Background

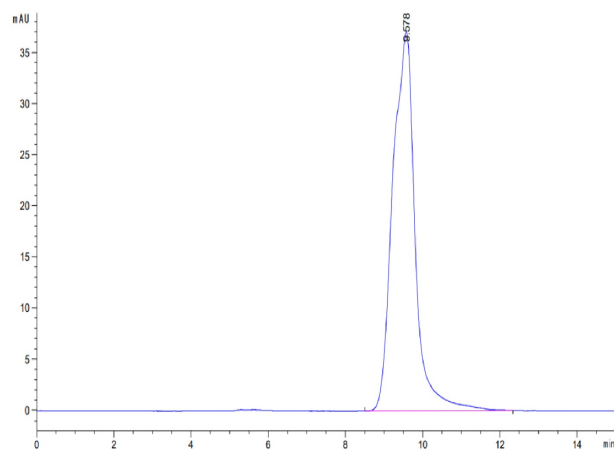
Kirsten rat sarcoma 2 viral oncogene homolog (KRAS) is the most commonly mutated oncogene in human cancer. The developments of many cancers depend on sustained expression and signaling of KRAS, which makes KRAS a high-priority therapeutic target. The virtual screening approach to discover novel KRAS inhibitors and synthetic lethality interactors of KRAS are discussed in detail.

Assay Data**Tris-Bis PAGE**

Human HLA-A*11:01&B2M&KRAS G12D (VVVGADGVGK) Monomer on Tris-Bis PAGE under reduced condition. The purity is greater than 95%.

SEC-HPLC

Assay Data

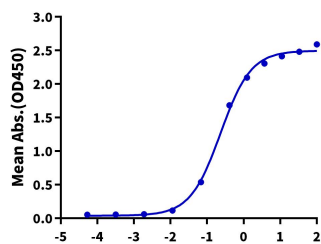


The purity of Human HLA-A*11:01&B2M&KRAS G12D (VVVGADGVGK) Monomer is greater than 95% as determined by SEC-HPLC.

Assay Data

ELISA Data

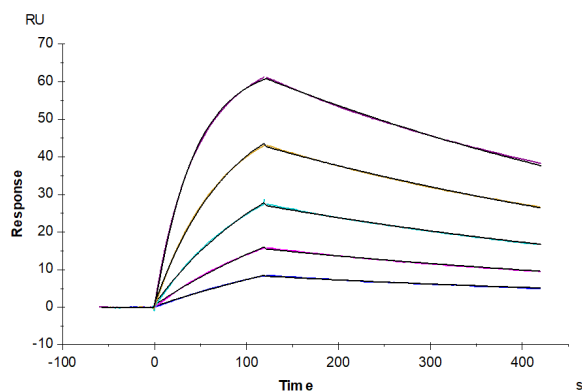
Human HLA-A*11:01&B2M&KRAS G12D (VVVGADGVGK) Monomer, His Tag ELISA
 0.5µg HLA-A*11:01&B2M&KRAS G12D (VVVGADGVGK) TCR Per Well



Immobilized HLA-A*11:01&B2M&KRAS G12D (VVVGADGVGK) TCR at 5µg/ml(100µl/well) on the plate. Dose response curve for Human HLA-A*11:01&B2M&KRAS G12D (VVVGADGVGK) Monomer, His Tag with the EC50 of 0.23µg/ml determined by ELISA (QC Test).

Log Human HLA-A*11:01&B2M&KRAS G12D (VVVGADGVGK) Monomer, His Tag Conc.(µg/ml)

SPR Data



Human HLA-A*11:01&B2M&KRAS G12D (VVVGADGVGK) Monomer, His Tag captured on CM5 Chip via Anti-His Antibody can bind HLA-A*11:01&B2M&KRAS G12D (VVVGADGVGK) TCR with an affinity constant of 14.91 nM as determined in SPR assay (Biacore T200).